



Team Viewer Technology for Remote Control of a Computer

Cornelia Victoria Anghel Drugarin, Silviu Draghici, Eugen Raduca

Team Viewer software is used to remote control our PC. We can use this remote control technology to desktop sharing, online conferences and for file transfer between computers. Basically, using this software, you can ask for help a friend, or professional software to solve problems from a distance, without it having to be physically go to each client / friend in part. After installed and configured Team Viewer application, is complete, we can remote control the computer.

Keywords: *Team Viewer software, remote control, online, desktop sharing*

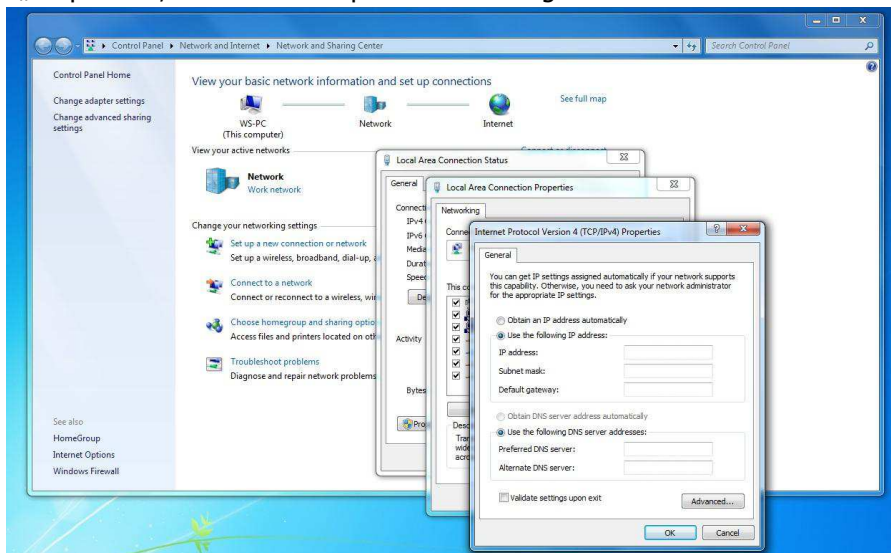
1. Introduction

Team Viewer is an application used to control a personal computer, from a distance. It can be used also to desktop sharing, online conferences and for file transfer between computers. The program is compatible with Windows, Mac OS, Linux, iOS, Android and Windows Phone, operating systems. The main function of Team Viewer is a remote control of computers on which browser it runs. Team Viewer, also enables remote provision of technical support. Basically, using this software, you can ask for help a friend, or professional software to solve problems from a distance, without it having to be physically go to each client / friend in part.

2. Team Viewer Install and Configuration

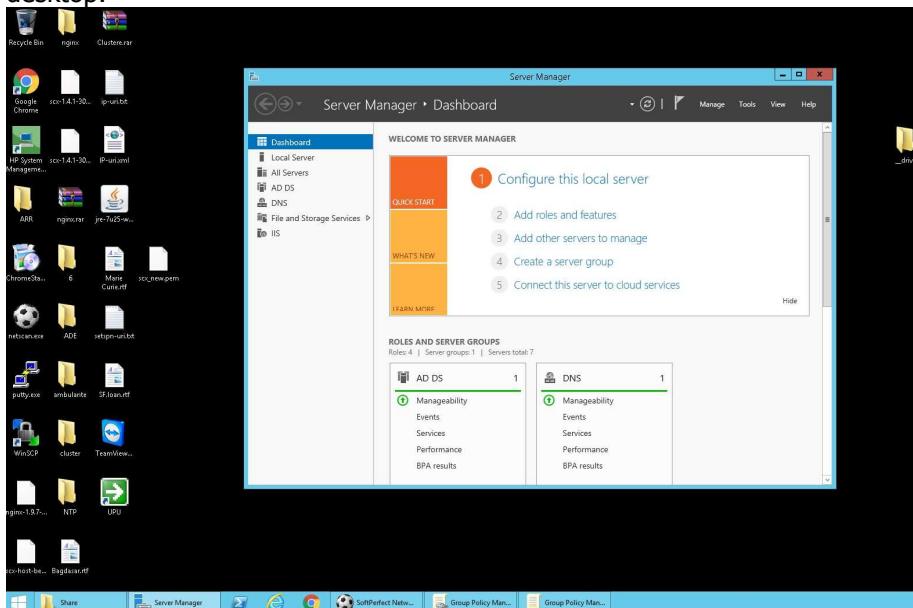
1. We set a password for BIOS, work station and tablets *****.
For PANASONIC PC and tablets, we must do so:
 - a. press the **power** top left button, and then Volume Down from the back of the tablet.
 - b. press **F10** button for BIOS Setup
 - c. select Security menu

- d. select menu Setup BIOS Administrator Password
 - e. type the password ***** and confirm
 - f. press OK button, twice
 - g. Return to Main menu
 - h. press Save Changes and Exit
 - i. confirm with Yes and restart the tablet.
2. Log in with **local administrator** account, which it was established at the time of installation stations / tablets.
 3. Cheking (for tablets) that SSID is in a Block-WiFi.txt type file. If not exists, the tablet will not be able to access Wi-Fi network.
 4. It will make the network settings on „Control Panel -> Network and Internet -> Network and Sharing Center“, click on „Local Area Connection -> Properties“, select „Internet Protocol Version 4 (TCP/IPv4)“, press „Properties“, enter and accept network settings. We use DNS ***** server.



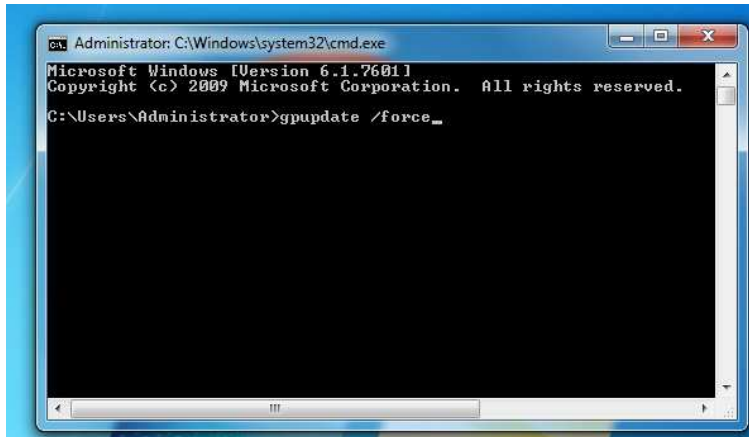
5. Connectivity with servers will check by command ping *****. Press Start -> All programs -> Accessories -> Command Prompt and type ping command.
6. It will establish the station name after the pattern: **XXYYYWS01, XXY-YWS02**.
For WS tablet will replace, for example, with TAB (**XXYYTAB01**).
7. It will be Join at **name_domain.domain** with user **admin.xx** and password ********* , where **xx** is **domain administrator code**. With right-click on

- Computer - > Properties click on "Change settings" press "Change...", type the name domain **name_domain.domain** and applies the settings.
8. Press OK task, a notification will appear that will keep domain name **name_domain.domain**, and the computer will restart automatically.
 9. After the computer restart, we make log-in with domain administrator account.
 10. To move stations / tablets of Computers in an Organizational Unit (O.U.) is accessed one Domain Controller server.
 11. We type the IP of Domain Controller server. We press "Connect" and enter the password of domain administrator. If the primary server has occupied all active connections will be connecting to the secondary server. Disconnecting from the server is done with Sign out.
 12. It will be waiting until the connection is remote server. Will appear a security message, place check mark on "do not show ..." and click Yes, then returns to desktop.

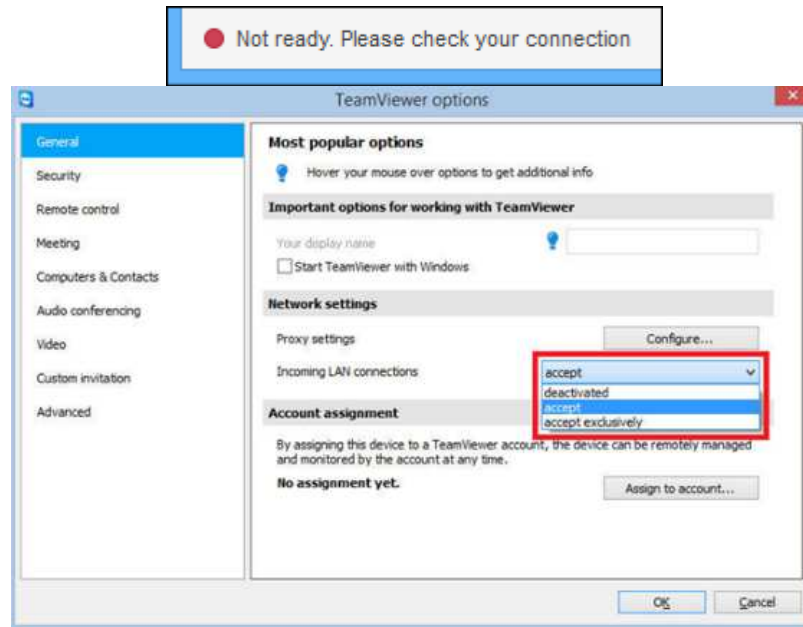


13. Click on windows logo and search **"user and computers"**. Is accessed **"Active Directory Users and Computers"**.
14. Work stations and introduced new tablets will be found in the "Computers" and they will move in Organizational Unit, created properly. Work Stations will be introduced in O.U. **"Stations"**, and tablets in O.U. **"Tablets"** in proper domain. Task OK and close the "Active Directory..." window.
15. We leave the server with "Sign out".

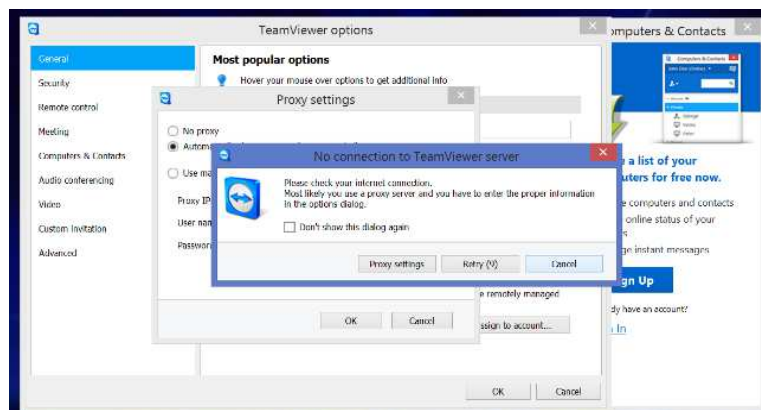
16. On work station choose option Start -> All programs -> Accessories -> Command Prompt and type **"gpupdate /force"** command, an than press Enter. When the update is complete, will require restarting the workstation. This is necessary for policy implementation work within the domain created for workstations, tablets and servers.



17. We log-in on a computer workstation with an administrator code domain and change DNS with follows new IP's: *****, respectively *****.
18. In "cmd", with "run as administrator" option, type "ipconfig /flushdns" command and Enter task, to save the new IP's proper of DNS servers.
19. Following the implementation of policies, on desktop will find two powershell scripts: one for stations and one for tablets. Is right-click on the appropriate script (or tablet station) and choose the option "run with powershell...". After running the script, the computer will automatically restart. After the restart, it will continue running the same script until no longer restart the computer (running script is still 5 times - 6 runs 5 resets). The process will be considered finished when, after running the script, the computer no longer restarts automatically.
20. Team Viewer configuration:
- After we log-in on a computer workstation with an administrator account domain, we can start the TeamViewer software.
 - From Extras menu we select **Options**
 - In **General** tab we select **Network settings**
 - We select **PROXY SETTINGS -> CONFIGURE... -> NO PROXY**
 - And finally **INCOMING LAN CONECTION – ACCEPT**
If we omitting this step, we loose the remotely managed by assigning to device on Team Viewer application.



- We press **OK** and close the application.
- If the windows **No connection to TeamViewer server**, appears, we click on **Don't show this dialog again** and press **Cancel**.



21. Domain administrators will log on PC or tablets with newly created user account **xx.zzz** and password *********, respectively user **xx.bbb** with ********* password, where xx is a subdomain code (for example company name, institution, etc.) and check for the desktop icons Google Chrome, TeamViewer.

4. Conclusions

To achieve a broad internal network data transmission is necessary to configure all P.C.'s, tablets, and other devices that are part of the network according to the methodology presented in the paper. This is necessary and to take remote control of any device (PC, workstation, etc.) of the internal network.

It is very important introduction stations in the field. This is the first step in creating a very extensive network of data transmission.

References

1. Jurca I., *Programarea rețelelor de calculatoare*, Editura de Vest, Timișoara, 2001.
2. Mclean S., Naftel J.; Williams K., *NET Remoting*, MS Press, 2003.
3. Rammer I., *Advanced. NET Remoting*, APress, 2002.
4. <https://www.teamviewer.com/ro/>
5. <http://www.bluesmoke.ro/ce-este-team-viewer-si-cum-se-foloseste/>

Addresses:

- Lect. Dr. Eng. Cornelia Victoria Anghel Drugarin, "Eftimie Murgu" University of Reșița, Piața Traian Vuia, nr. 1-4, 320085, Reșița, c.anghel@uem.ro
- Drd. Eng. Silviu Draghici, "Politehnica" University Timisoara, Bd. V. Parvan, nr.2, 300223, Timisoara, s.draghici@uem.ro
- Prof. Dr. Eng. Eugen Raduca, "Eftimie Murgu" University of Reșița, Piața Traian Vuia, nr. 1-4, 320085, e.raduca@uem.ro.